

# pro clima CONTEGA PV

## Plaster Sealing Tape with Reinforcement

- Vapour-check plaster sealing tape
- 3-layer PET fleece can be bedded in plaster
- No further plaster reinforcement necessary
- For high-quality transitions between vapour checks and gypsum plaster
- Durable, secure, airtight bond
- Clear interconnection between the plaster and airtightness layer



### Planning and usage guidelines

The joints between vapour checks or airtightness membranes and adjoining structural components could potentially cause defects in the airtightness of a construction. These connections should therefore be carefully planned and executed. Plasterers can ensure that vapour check connections are airtight by using plaster reinforcement.

If plastering is already completed the joint can be sealed with ORCON F. However, this procedure is often subjected to problems with regards to airtightness and moisture entry into the thermal insulation as well as disruption to the sequence of construction processes.

### Applications/Advantages

pro clima CONTEGA PV is a plaster sealing tape which creates high-quality, permanently secure, airtight joints between vapour checks and gypsum plaster.

### Handling

The vapour check is joined to the airtight CONTEGA PV fleece by means of the integrated adhesive tape. An airtight transition to the plaster on the wall is created by embedding the fleece in the middle layer of the gypsum plaster.

### Please note

Gypsum plaster bonds very well to the PET fleece. Lime plaster and cement plaster require a bonding layer such as reinforced mortar.

### Technical Data

Backing	PET- fleece with plaster reinforcement and functional membrane
mvtr-value	11,5 MNs/g
Temp. resistance	Long term -40° C bis +90° C
Working temp.	from -10° C
Colour	light blue / dark blue
Roll width	20 cm
Roll length	15 m

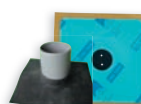
## pro clima system components for secure airtight adhesion:



**TESCON No.1**  
Multi-purpose adhesive tape for inside and outside.



**ORCON F**  
For connections to adjoining structural components.



**KAFLEX/ROFLEX**  
Cable/pipe grummetts  
Secure feed-through for cables and pipes.



# pro clima CONTEGA PV

## Plaster Sealing Tape with Reinforcement

### Application

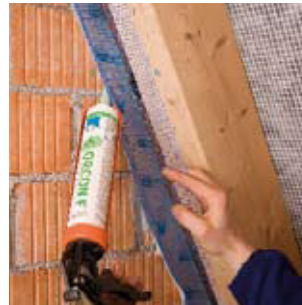
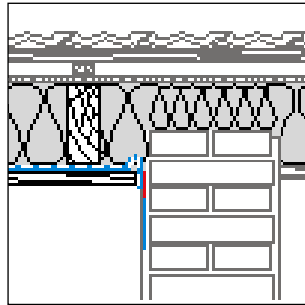
pro clima CONTEGA PV creates high-quality, permanently secure, airtight joints between vapour checks or airtightness membranes, for example, pro clima DB+ and INTELLO or

membranes made of PE, PA, PP and aluminium, and adjoining structural components that have to be plastered after installation of the vapour check or airtightness membrane.

### Surfaces

Surfaces of brick, lime sand brick, porous concrete, pumice stone concrete, etc., which have to be plastered after installation of the vapour check and airtightness membrane.

### Application



Fix pro clima CONTEGA PV to selected points of the masonry by nailing or by bonding with ORCON F. On soft substrates, such as expanded concrete, pumice concrete or hollow blocks, you can nail directly into the bricks, otherwise nail between the bricks. There should be no hollow spaces below the tape, i.e., the top edge of the tape must be firmly stuck to the wall.



Install the vapour check. Remove the strips of release paper from the back of the CONTEGA PV and affix the fleece to the airtightness layer using the exposed adhesive. Form an expansion loop. Rub firmly to secure the adhesive.



Embed the CONTEGA PV in the middle of the plaster by lifting the back the fleece and reinforcement, applying plaster to the wall behind the CONTEGA PV, laying the fleece and reinforcement in the freshly applied layer of plaster and then completing the plaster work.

Gypsum plaster bonds excellently with the fleece. When used with plaster that contains lime or cement, a bonding layer, such as reinforced mortar, is required.

Last updated: 10/2011

Further information about application and construction is given in the pro clima planning documentation.

(Please also take note of the recommendations contained in the current pro clima application matrix)

If you have any questions, please call the pro clima technical hotline Ireland and UK:  
Phone: +353 46 9432104  
Fax: +353 46 9432435  
info@ecologicalbuildingsystems.com

For Stockists contact  
Ireland  
T. 046 9432104  
F. 046 9432435  
UK  
T. 05600 758025  
F. 05600 758026

Ecological Building Systems Ltd.  
Main St, Athboy  
Co Meath  
Phone +353 469432104  
Fax +353 469432435  
info@ecologicalbuildingsystems.com  
www.ecologicalbuildingsystems.com

[www.proclima.com](http://www.proclima.com)

MOLL bauökologische Produkte GmbH • Rheintalstraße 35 - 43 • D-68723 Schwetzingen • Tel: +49 (0) 62 02 - 27 82.0 • Fax: +49 (0) 62 02 - 27 82.21 • email: info@proclima.com

